



INDOFINE Chemical Company, Inc.

121 Stryker Lane, Bldg. 30, Suite 1 • Hillsborough, NJ 08844 • U.S.A.

Phone: (908) 359-6778 • FAX: (908) 359-1179

website: www.indofinechemical.com

e-mail: chemical@indofinechemical.com

CERTIFICATE OF ANALYSIS

Cat No.: 22-386

Product: 3-HYDROXY-6-METHYL-3',4'-METHYLENEDIOXY
FLAVONE

Lot Number: 0604038

Chemical Formula: C₁₇H₁₂O₅

Molecular Weight: 296.28

Melting Point: 196-198°C

Appearance: Light yellow powder

Solubility: Soluble in chloroform:methanol (9.5:0.5)

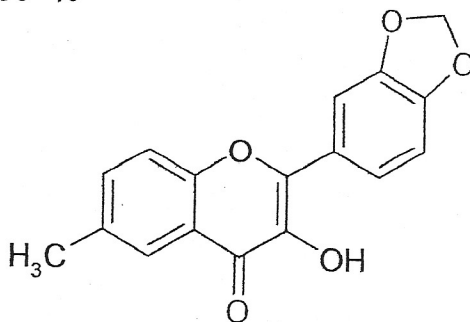
TLC: Benzene:Methanol (9.6:0.4) single compound

NMR Spectrum: Enclosed

IR Spectrum: Enclosed

Storage: Cool dry place

Purity(HPLC): 99+%





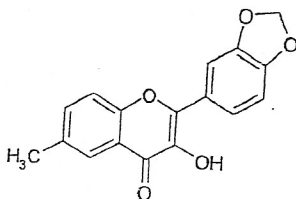
INDOFINE Chemical Company, Inc.

121 Stryker Lane, Bldg. 30, Suite 1 • Hillsborough, NJ 08844 • U.S.A.

Phone: (908) 359-6778 • FAX: (908) 359-1179

website: www.indofinechemical.com

e-mail: chemical@indofinechemical.com



HPLC ANALYSIS

Catalog no.: 22-386

Product name: 3-Hydroxy-6-methyl-3',4'-methylenedioxyflavone

Lot No.: 0604038

Sample Info:

Sample ID : NP-034

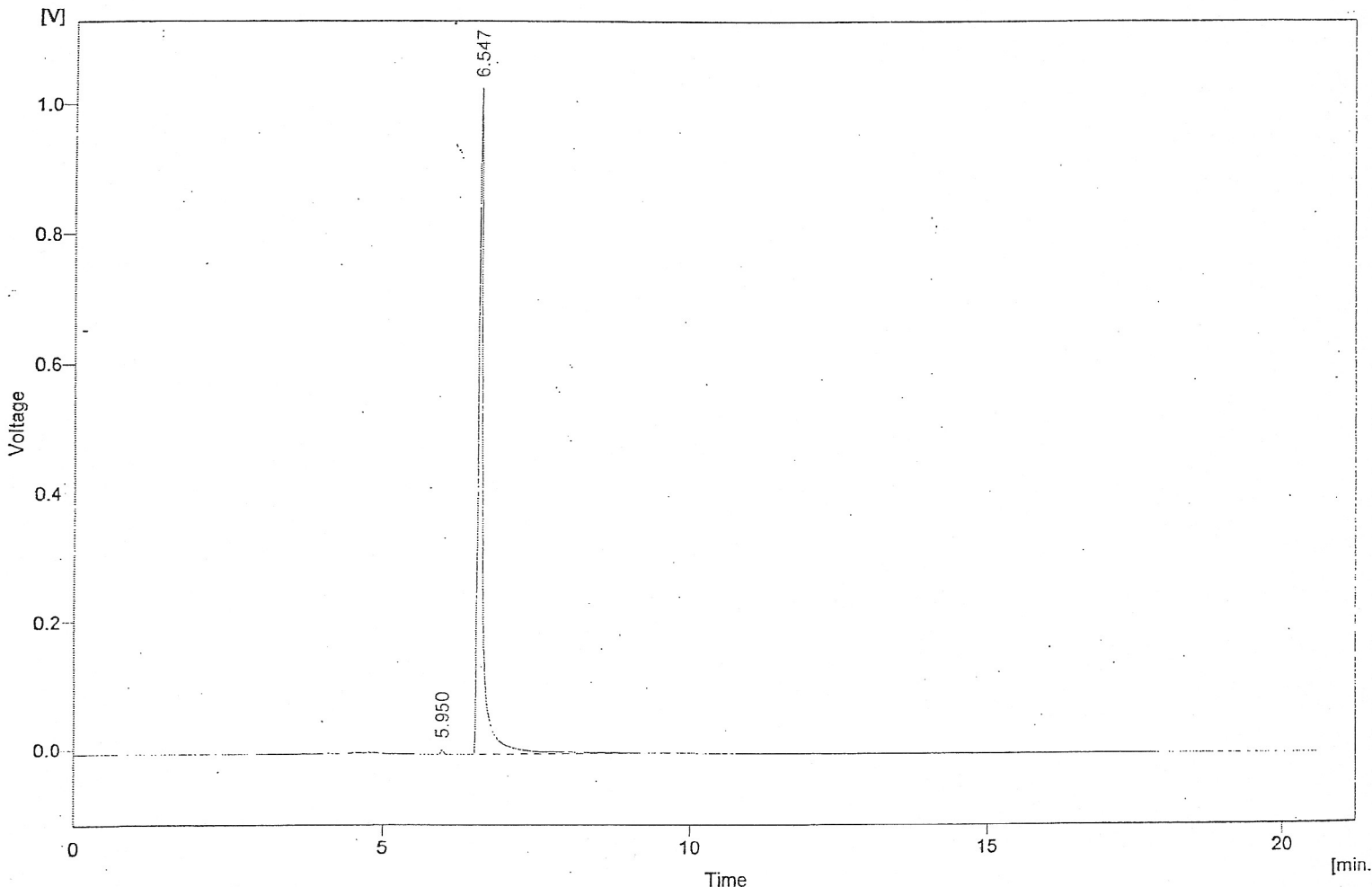
Sample : 3- HYDROXY-6- METHYL3',4' METHYLENE DIOXY FLAVONE

Inj. Volume [ml] : 0

Amount : 0

ISTD Amount : 0

Dilution : 1



Result Table (Uncal - E:\HPLC\WP-0341)

	Reten. Time [min]	Area [mV.s]	Height [mV]	Area [%]
1	5.950	25.963	7.101	0.4
2	6.547	5865.369	1033.117	99.6
	Total	5891.333	1040.218	100.0

(20 + 80)

MOBILE PHASE : WATER + ACETONITRILE, COLUMN : C₁₈(250cmx4.6mm),
WAVE LENGTH :254 nm, FLOW RATE :0.5ml/min

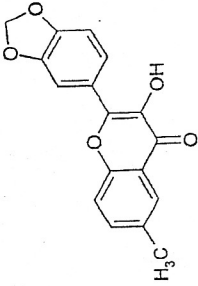


INDOFINE Chemical Company, Inc.
121 STRYKER LANE
BLDG. 30, SUITE 1
HILLSBOROUGH, NJ 08844

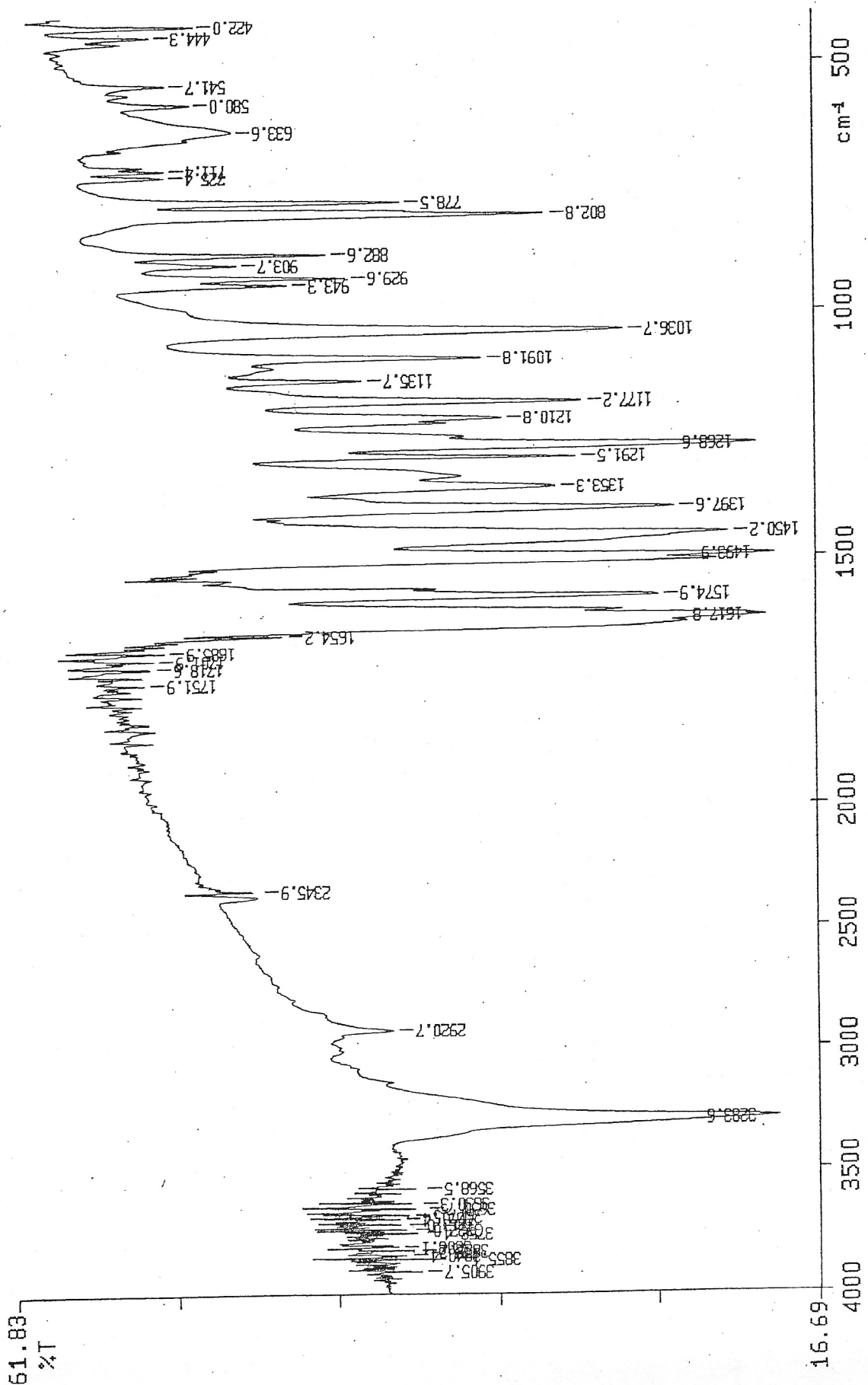
Catalog no.: 22-386

Product name: 3-Hydroxy-6-methyl-3',4'-methylenedioxyflavone

Lot No.: 0604038



PERKIN ELMER

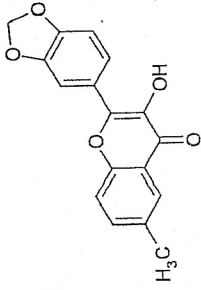


Y: 1 scan, 4.0cm-1

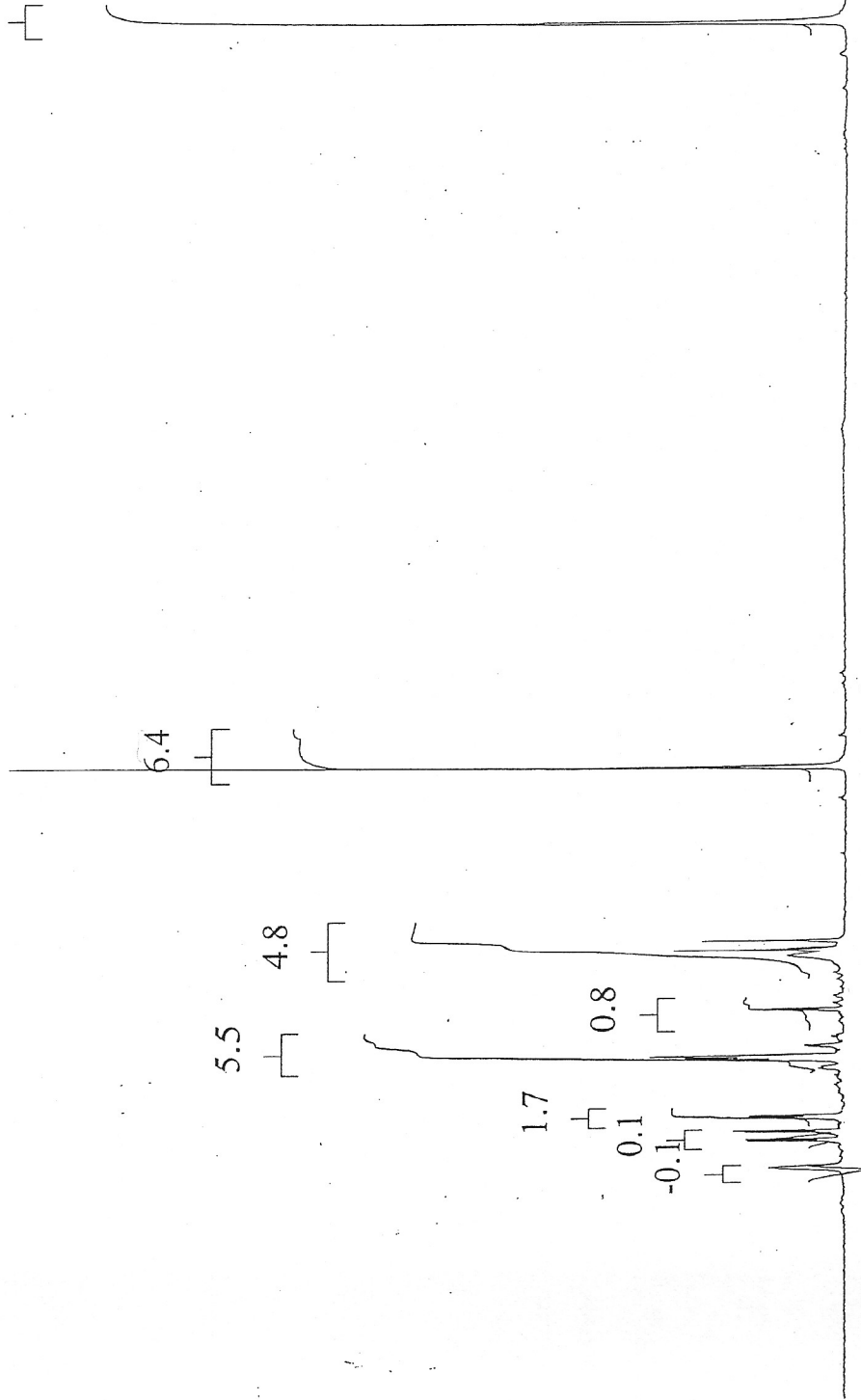


INDOFINE Chemical Company, Inc.
121 STRYKER LANE
BLDG. 30, SUITE 1
HILLSBOROUGH, NJ 08844

Catalog no.: 22-386
Product name: 3-Hydroxy-6-methyl-3',4'-methylenedioxyflavone
Lot No.: 0604038



8.7



9.0 8.5 8.0 7.5 7.0 6.5 6.0 5.5 5.0 4.5 4.0 3.5 3.0 2.5 2.0 1.5 1.0 0.5 0.0